

## PHOTO QUIZ

## The ECG, a useful ally in the emergency room

C.L. Meuwese<sup>1</sup>, V.C. de Hoog<sup>2</sup>, S. Koudstaal<sup>2</sup>

Department of <sup>1</sup>Intensive Care Medicine and <sup>2</sup>Cardiology, University Medical Center Utrecht, the Netherlands

### Correspondence

C.L. Meuwese - c.l.meuwese@umcutrecht.nl

A 50-year-old male patient presented to the emergency room because of chest pain, dyspnoea and transient loss of consciousness. His previous medical history was relevant for hypertension and asthma. At presentation, his blood pressure was 70/40 mmHg and pulse rate 115 beats/min. His skin was pale and extremities were slightly cold. No other abnormalities were found at physical examination. Besides an elevated creatinine level (128  $\mu\text{mol/l}$ ), the laboratory results were unremarkable.

An ECG was taken, which is shown in figure 1 together with an ECG from five years previously, which was recorded for evaluation of atypical chest pain.

*What is your diagnosis?*

### Answer

You will find the answer on page 130 of this issue.

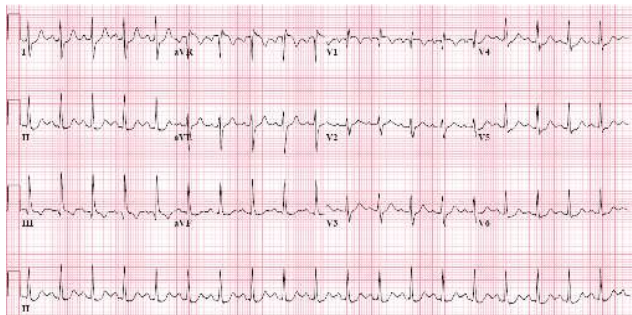


Figure 1. ECG at presentation

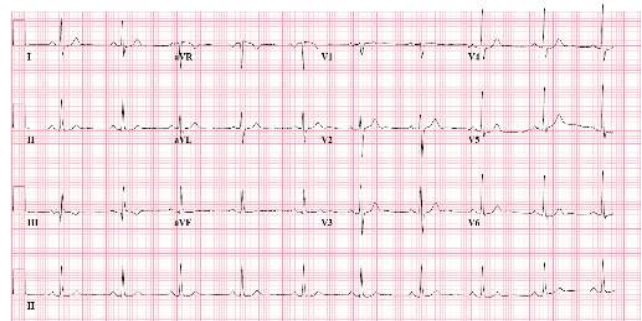


Figure 2. ECG from 5 years prior