

PHOTO QUIZ

A cool ECG

M.M. van Bommel¹, M. Hoogveen²

¹Departement of Internal medicine, Leiden University Medical Center, Leiden, the Netherlands

²Departement of Intensive Care Medicine, Alrijne hospital, Leiderdorp, the Netherlands

Correspondence

Correspondence M.M. van Bommel - m.m.van_bommel@lumc.nl

A 50-year-old lady was brought into the emergency room because of unconsciousness and severe hypothermia. Her past medical history included type 1 diabetes mellitus. She was found in her home in a comatose state; she had last contacted her family 15 hours before presentation.

She was directly admitted to the intensive care unit with a core temperature of 27.0°C, sinus bradycardia of 48 beats/min and a blood pressure of 78/48 mmHg. Her Glasgow Coma Scale was EVM 2-1-3.

Laboratory results demonstrated a severe diabetic ketoacidosis (pH <6.80, glucose 62 mmol/l) for which she was immediately treated with fluid resuscitation and insulin.

A short ECG registration of lead II showed a remarkable pattern (figure 1).

What is your diagnosis?

Answer

You will find the answer on page 237 of this issue.

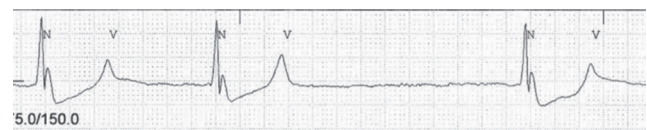


Figure 1. Short ECG registration of lead II during severe hypothermia (27.0 °C)



NJCC Best Article of the Year Award

The NVIC will award a prize for the best Review and the best Original Article in 2018. In both categories the top 3 papers in 2018 will be nominated by the executive board of the Netherlands Journal of Critical Care. NVIC members may vote and the prizes will be awarded during the Intensivistendagen in February 2019.

The executive board invites you to submit your article to the Netherlands Journal of Critical Care.

www.nvic.nl